

## Safety Switch General Information

Global Specifications	
SystemVoltage	240 VAC
SwitchType	Single Throw - GeneralDuty
Poles/Blades	3-Pole
Amperage	60
Protection	Fusible withNeutral
EnclosureType	NEMA1
SpecialPaint	Red
FuseClips	Standard
SwitchLugs	Standard
FungusProofTreatment	N
Lock-OnProvision	Y
FusePullers	N
ControlPole	N
GroundLugs	Y
StainlessMechanism	N
MillDuty	N

### Cover Controls

QUANTITY	DESCRIPTION
----------	-------------

### Nameplate

FirstLine:	FirePump
SecondLine:	DisconnectingMeans

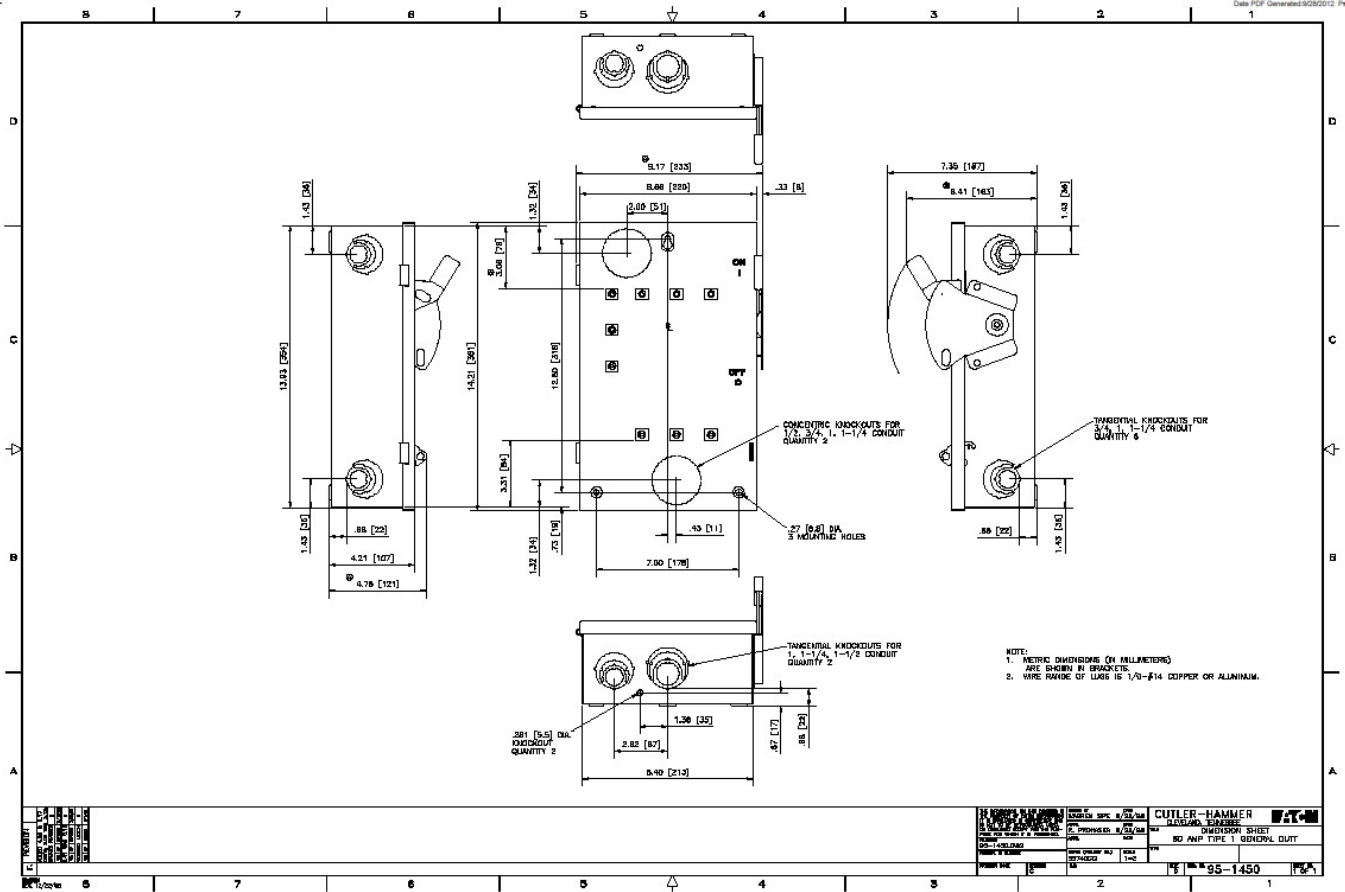
### Safety Switch Catalog No.

DG322NGBLORED

<p><b>The information on this document is created by Eaton Corporation. It is disclosed in confidence and it is only to be used for the purpose in which it is supplied.</b></p>	PREPARED BY	DATE			
		6/28/2016			
	APPROVED BY	DATE	JOB NAME	SAFETY SWITCHES	
		DESIGNATION			
	VERSION	TYPE	DRAWING TYPE		
	1.0.0.1	Safety Switch General Information	Customer Appr.		
NEG-ALT Number	REVISION	DWG SIZE	G.O.	ITEM	SHEET
F4860929X5K3-0000	0	A			1 of 1

# Eaton

Date PDF Generated: 02/02/2012 Page: 1 of 1



<b>CUTLER-HAMMER</b> 80 AMP TYPE 1 GENERAL DUTY OVERFLOW SHEET	<b>95-1450</b>
--	----------------